

PART OF SECTION 14, T. 6 N., R. 3 E., S. L. B. & M.  
**CAUSEY ESTATES SUBDIVISION NO. 1**

59

TAXING UNIT: 58

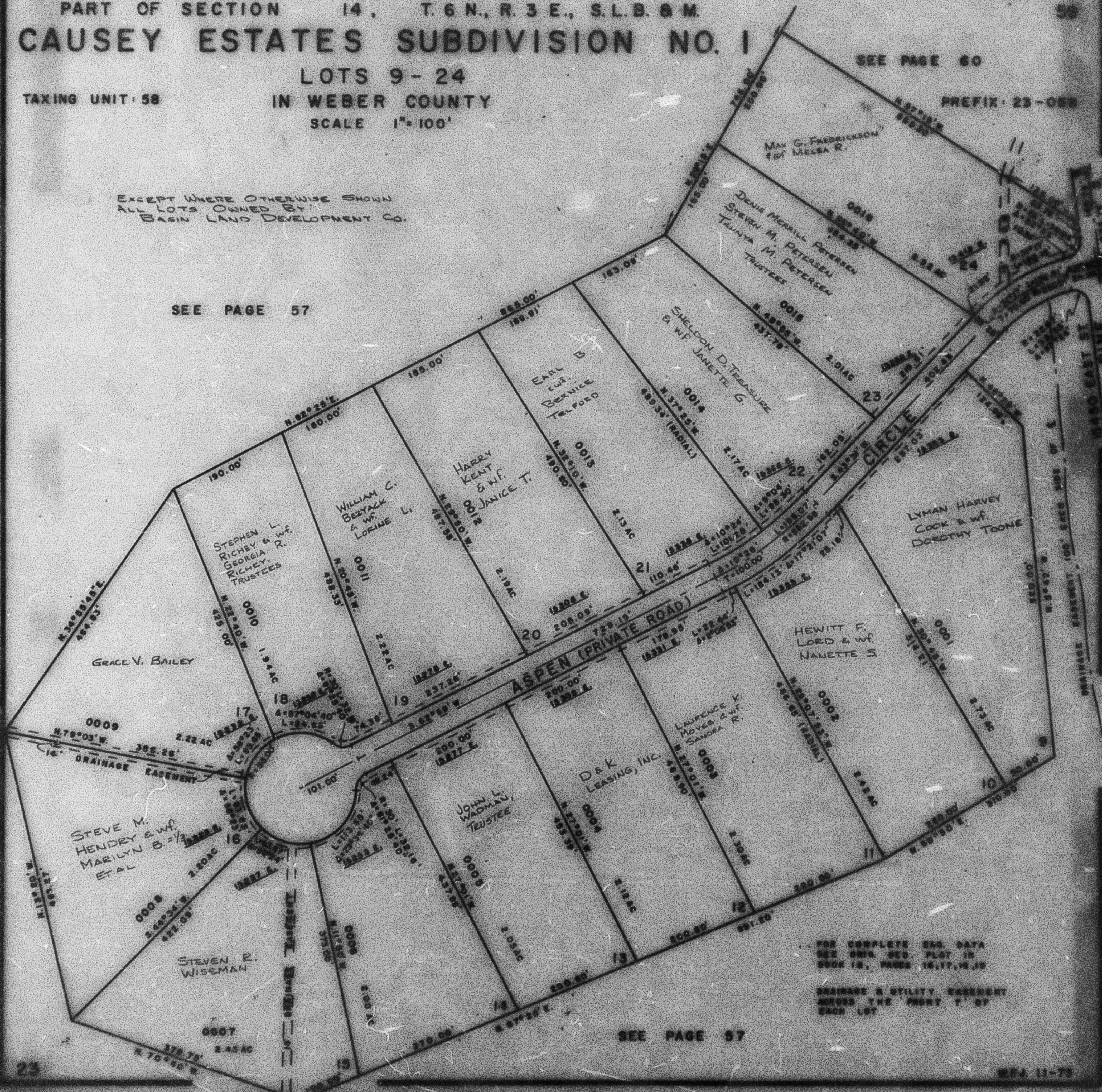
LOTS 9-24  
IN WEBER COUNTY  
SCALE 1" = 100'

SEE PAGE 60

PREFIX: 23-059

EXCEPT WHERE OTHERWISE SHOWN  
ALL LOTS OWNED BY:  
BASIN LAND DEVELOPMENT CO.

SEE PAGE 57



FOR COMPLETE ENG. DATA  
SEE ENG. DES. PLAT IN  
BOOK 18, PAGES 15, 17, 18, 19  
DRAINAGE & UTILITY EASEMENT  
ACROSS THE FRONT 7' OF  
EACH LOT

SEE PAGE 57